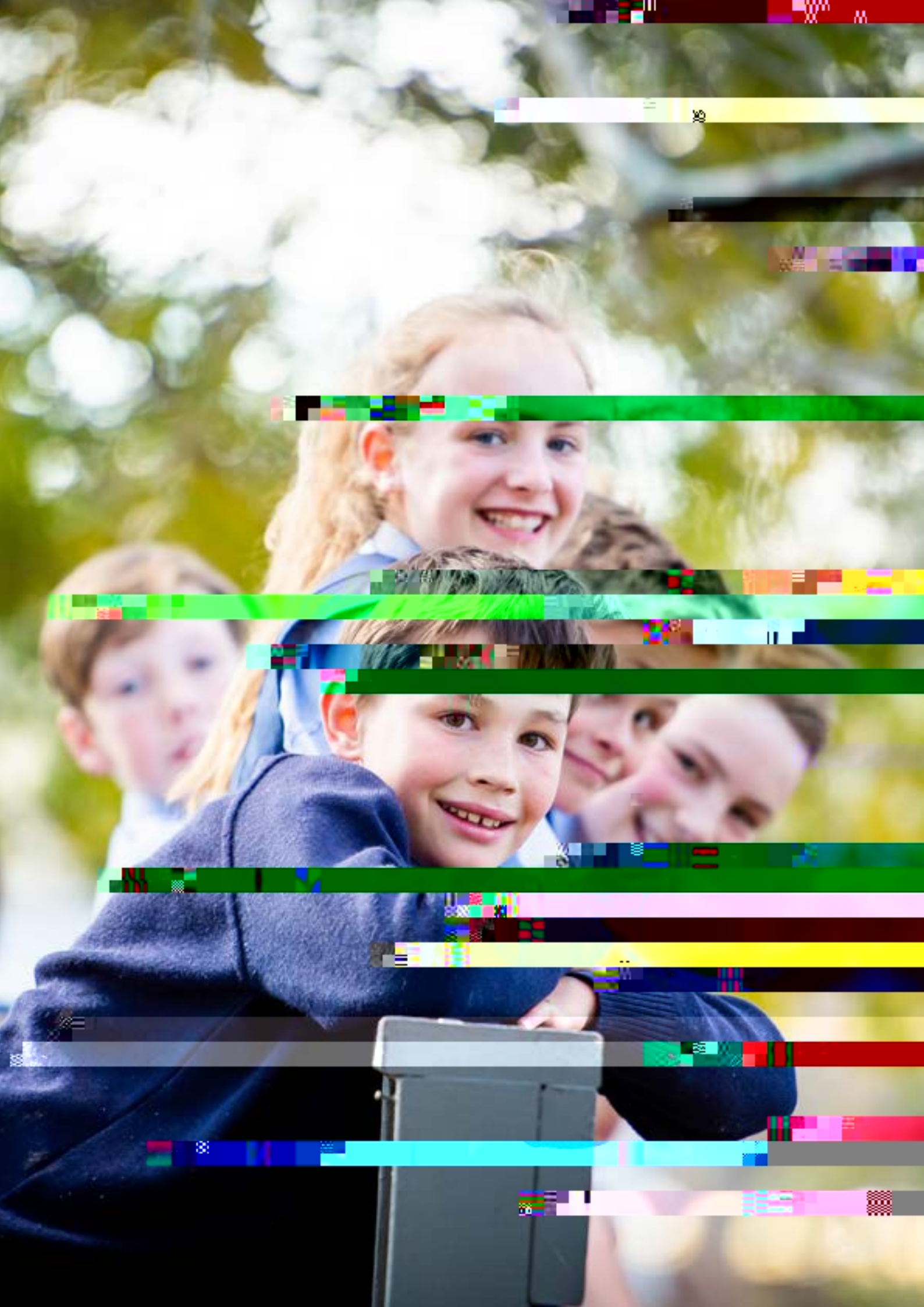
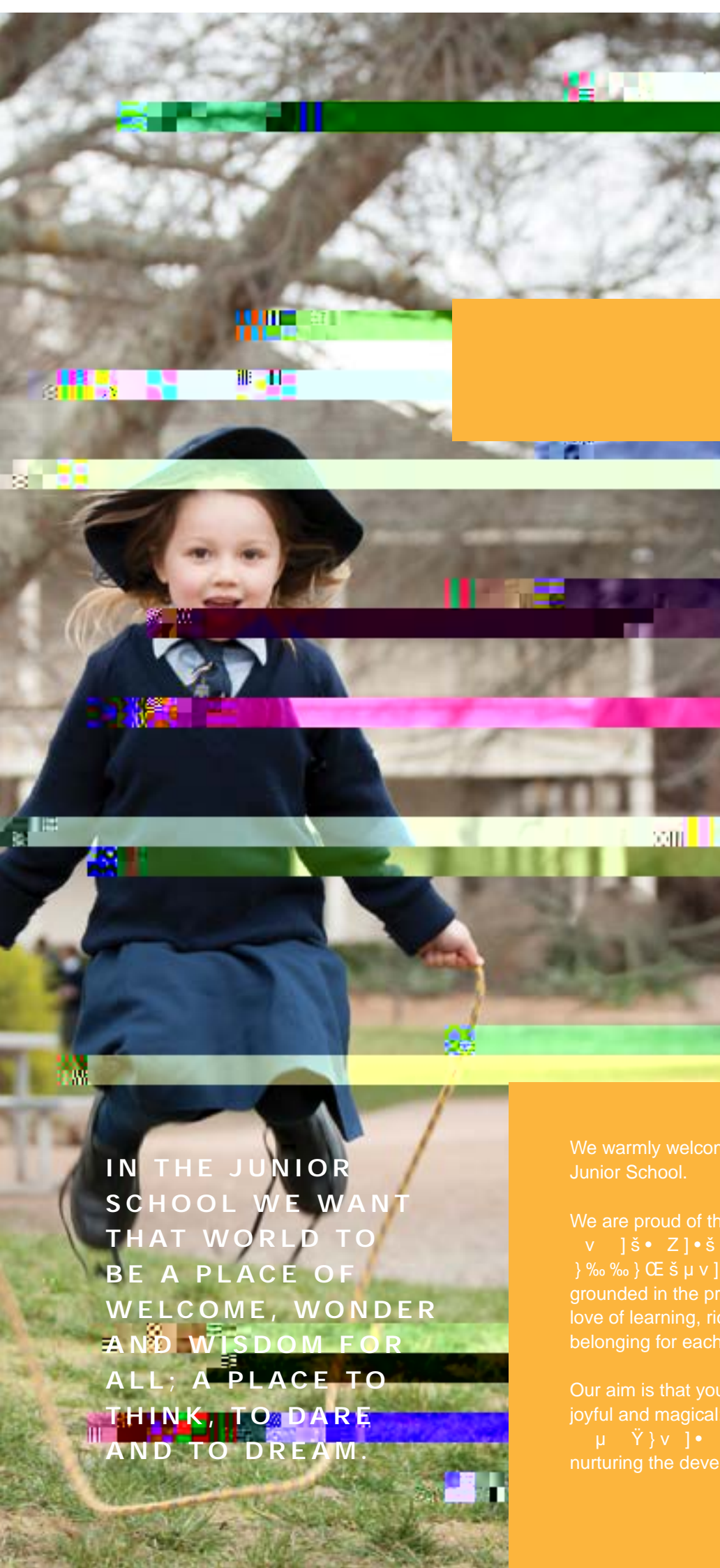


ON



to think
to da



IN THE JUNIOR
 SCHOOL WE WANT
 THAT WORLD TO
 BE A PLACE OF
 WELCOME, WONDER
 AND WISDOM FOR
 ALL; A PLACE TO
 THINK, TO DARE
 AND TO DREAM.

We warmly welcome you and your family to the Oxley Junior School.

We are proud of the founding mission of Oxley College grounded in the present. We know that to nurture a love of learning, richness of opportunity and sense of belonging for each child is key.

Our aim is that your child's Junior School years are joyful and magical; remembered with great fondness. nurturing the development of each child in the Junior

Although the school began only forty years ago, it feels like it has been a part of the Southern Highlands landscape for much longer than that - perhaps founded in 1883, not 1983. This is partly due to the graceful main building, Elvo, and the grounds. It is also, however, something deeper than that. I think it is because it seems necessary, indeed inevitable, that a community such as this should have a school such as Oxley.

The Southern Highlands is a community that has high standards and will let them see that, with rigour and hard work, almost anything is possible. We aspire to give the students the advantages of a 'big city' school, without parents having to send their children away to the boarding houses of Sydney or Melbourne.

Many people in the Highlands want a school that respects the role of tolerant, ecumenical spirituality in a life of men and women and know the importance of them working together. We also respect the profound, personal nature of each individual's life. This respect is deep in Oxley's soil.

So, I think this is why it feels that Oxley has been here for much longer than forty years: we should have been here in the Southern Highlands since the beginning of time. We are proud to educate the sons and daughters of those who choose to live here. We are proud to be the type of school we are.

On a more personal note, we look forward to making the conscious choice to raise their children in a safe and caring environment and look forward to the miracle of their journey from childhood to adulthood. We have an extensive library of books and resources available to all students.

VISION

1. The first step is to identify the problem or goal. This involves understanding the current situation and what needs to be achieved. For example, if the goal is to increase sales, the first step would be to analyze the current market and identify potential opportunities.

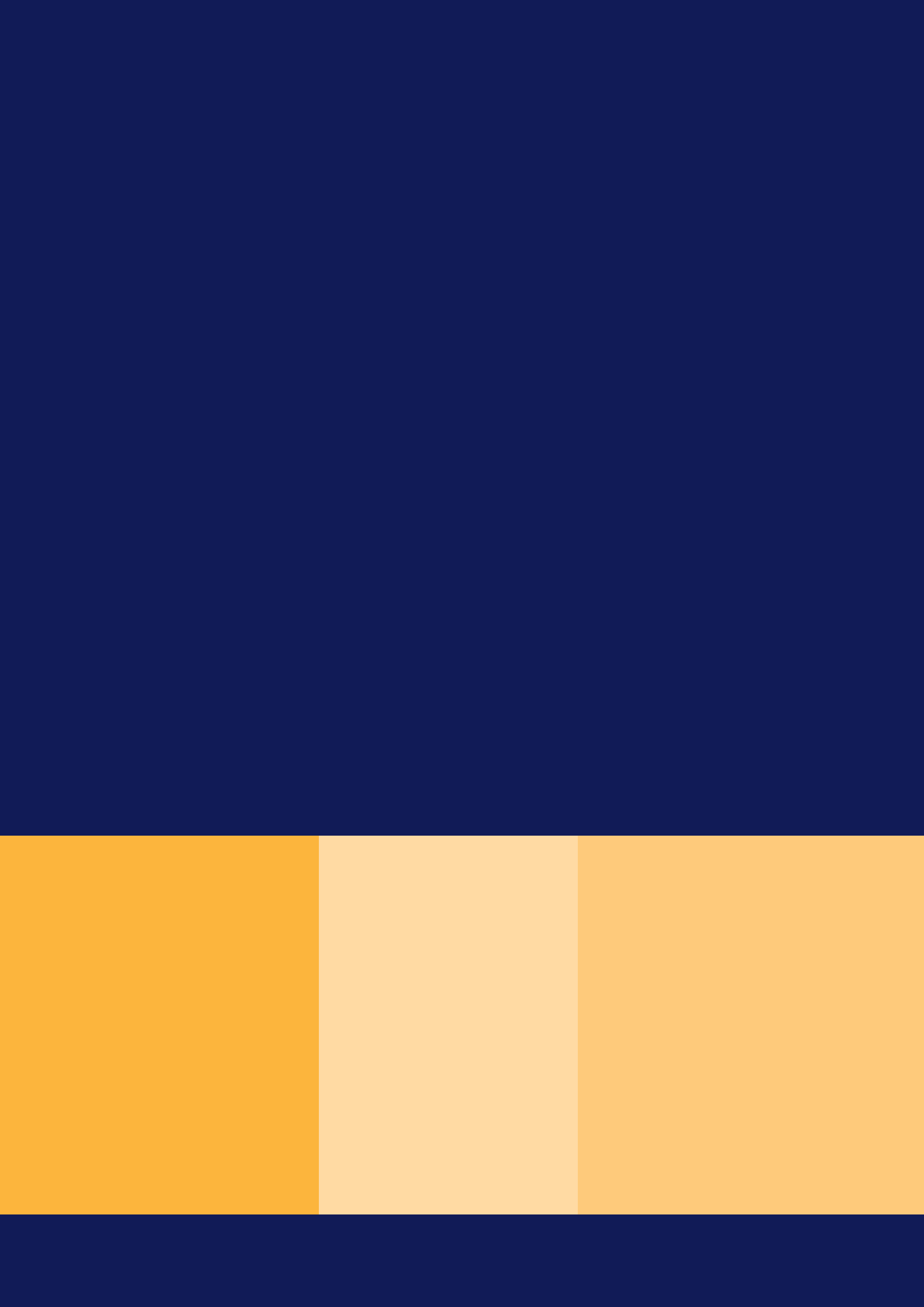
2. Next, it's important to set clear, measurable objectives. These should be specific and achievable. For instance, instead of saying "increase sales," a more precise goal would be "increase sales by 10% over the next six months." This helps in tracking progress and evaluating success.

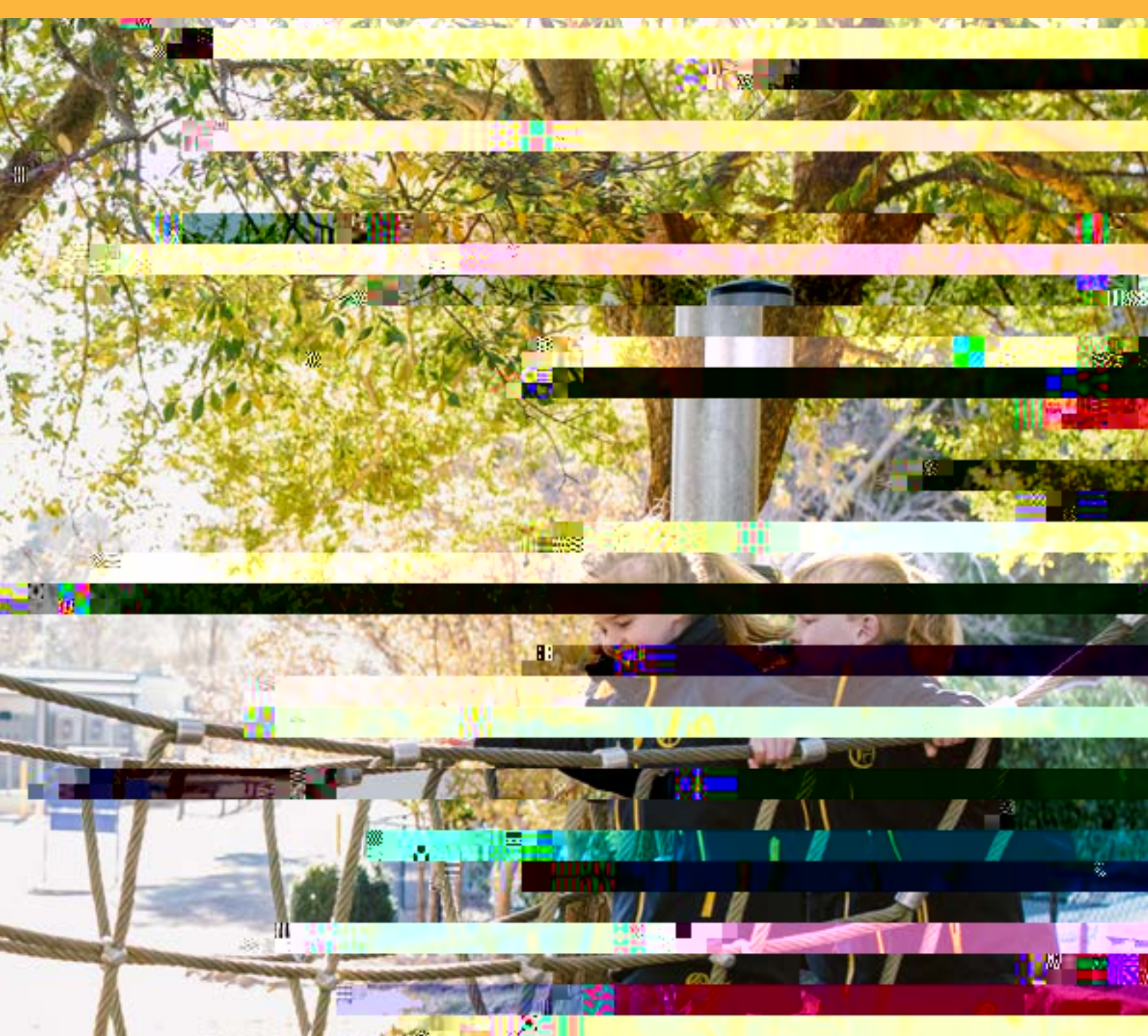
3. Once objectives are set, the next step is to develop a strategy. This involves determining the best approach to achieve the goals. For example, if the goal is to increase sales, a strategy might involve launching a new marketing campaign or expanding into new markets.

4. After the strategy is developed, it's time to implement it. This involves putting the plan into action and monitoring progress. Regular communication and reporting are essential to ensure that the strategy is being followed and to make adjustments as needed.

5. Finally, it's important to evaluate the results and make adjustments as necessary. This involves comparing the actual results against the objectives and identifying areas for improvement. For example, if sales are not increasing as expected, it might be necessary to re-evaluate the strategy and make changes.







JUSTICE

Civic strengths that support a healthy community life

- Fairness
- Leadership
- Teamwork
- Service

MINDFULNESS

Character strengths that protect against excess

- Forgiveness
- Humility
- Self-discipline
- W Ę v

Adapted from Peterson & Seligman, 2004



C E E HISTORY & PHILOSOPHY

**OXLEY COLLEGE IS AN INDEPENDENT,
CO-EDUCATIONAL AND NON-DENOMINATIONAL P – 12
DAY SCHOOL FOUNDED ON CHRISTIAN PRINCIPLES.**

Established to develop the fundamental principles of this small and personal enough for students to feel that their philosophy. High standards of dress, courtesy, conduct and discipline are maintained. Oxley provides the principles for which Oxley stands. Oxley provides Oxley aims to develop in its students the virtues they will believe to be with each of everyone. It is hoped that Oxley students will carry a sense of responsibility and a compassion for the needs of others and a compassion for the mind, the body and the spirit, recognising that in harmony they contribute to wholeness of being. Above all, we hope to engender in our students an understanding that 'being' is more important than 'having' and feels and believes and strives which is paramount.

t Á v š š} l v} Á } μ š š Z š Z} μ P Z š • v Ÿ} v • } (š Z Á] • • š % } % o (Œ } u Œ } • • % o v Ÿ u v Á

want to become wise ourselves. We want to be able to learn how to use this wisdom to enhance our planet and its people, now and in the future. We seek to foster

š Z] • • %] Œ Ÿ } v v %] š Ç] v Z Z] o š Z Œ } μ P Z v Æ % Œ] v } (o Œ v] v P š Z š] • Ç v u] U] v v } Á Ÿ Á v Z] o r v š Œ š Z Œ } μ P Z š Z % Œ } Á] • } } v } (Z] P Z ‹ μ o] š Ç learning and teaching.

K μ Œ] Ÿ } v š } % Œ % Œ] v P • š μ v š • () Œ š Z] Œ (μ š μ Œ •] v • %] Œ • μ • š } (} o o } Á • š % Œ Ÿ] v š Z] v P v

learning. Our cF011E00015A018C>1F>7601>60175B. Our cF01.7 5A018C>1F cF0ximis030119F017D01016F016F017D

STUDENTS IN EACH STAGE UNDERTAKE CORE EXPERIENCES IN THE KEY LEARNING AREAS OF

- English
- Mathematics
- Science and Technology
- History
- Geography
- Personal Development, Health and Physical Education
- Music
- Art

SPECIALIST TEACHERS ALSO PROVIDE THE FOLLOWING CURRICULUM OFFERINGS:

- Chess
- Football
- Golf
- Hockey
- Judo
- Languages
- Rugby
- Swimming
- Tennis
- Table Tennis
- Volleyball
- Wrestling



A E

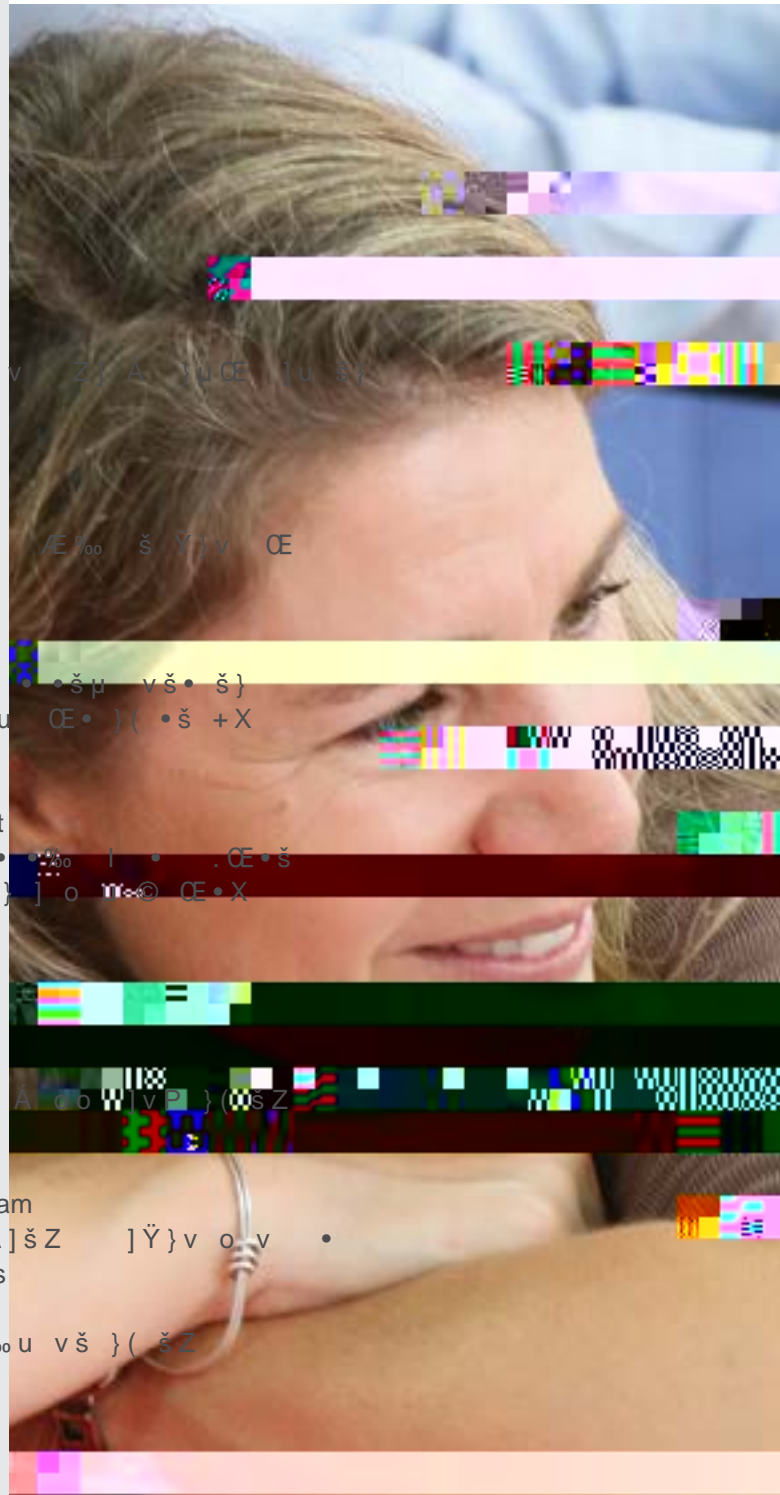
GROUPS

At Oxley we want to be a place of welcome for all. We know that through a deep trust in our students and the

Our students know that we might not be friends with everyone but we can always be friendly. Our teachers

Pastoral Care has always been a strength at Oxley
The focus of Pastoral Care within the Junior School environment is with the classroom teacher. The classroom teacher is the adult with whom students most

Our leadership structure also provides an integrated approach to Pastoral Care; our Deputy Head of Junior School, Stage Coordinators and Class Teachers all contribute to our shared knowledge and team based students. Our Welfare Team, comprising of the Junior School Leadership Team, K-12 Diverse Learning Team Leader and College Psychologist meet regularly as a team to be successful. Our support of the whole child ensures that we monitor and nurture the academic, social, students in our care through a range of evidence based



BUDDY PROGRAM

K sense of belonging for all. Our youngest students adore and admire their older buddies who in turn take great



CARE

F

E

E

C

D

BEHAVIOUR EXPECTATIONS

E I C

HOUSE SYSTEM

feel a sense of belonging and achievement across various year groups and outside of the curriculum areas.

Each Junior School student is allocated to a House. To

CHISHOLM (WHITE)

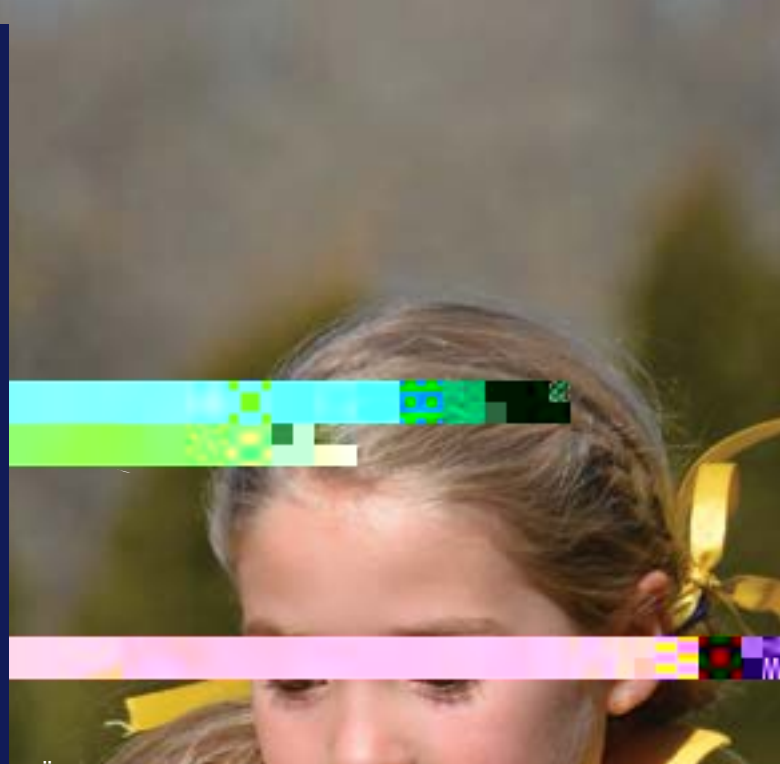
poor migrants to Australia last century. She graced the \$5 note for more than 20 years and is remembered as a

FLYNN (GOLD)

minister to the outback. He founded the Royal Flying Doctor Service, School of the Air and many other services to outback people. He wanted to create a 'mantle of safety over the inland'. His face is on the \$20 note.

WALTON (BLUE)

woman aviatrix who was the youngest woman to hold a commercial pilot's licence at 19. She worked for the Royal Flying Doctor Service becoming known as the Angel of the Outback.

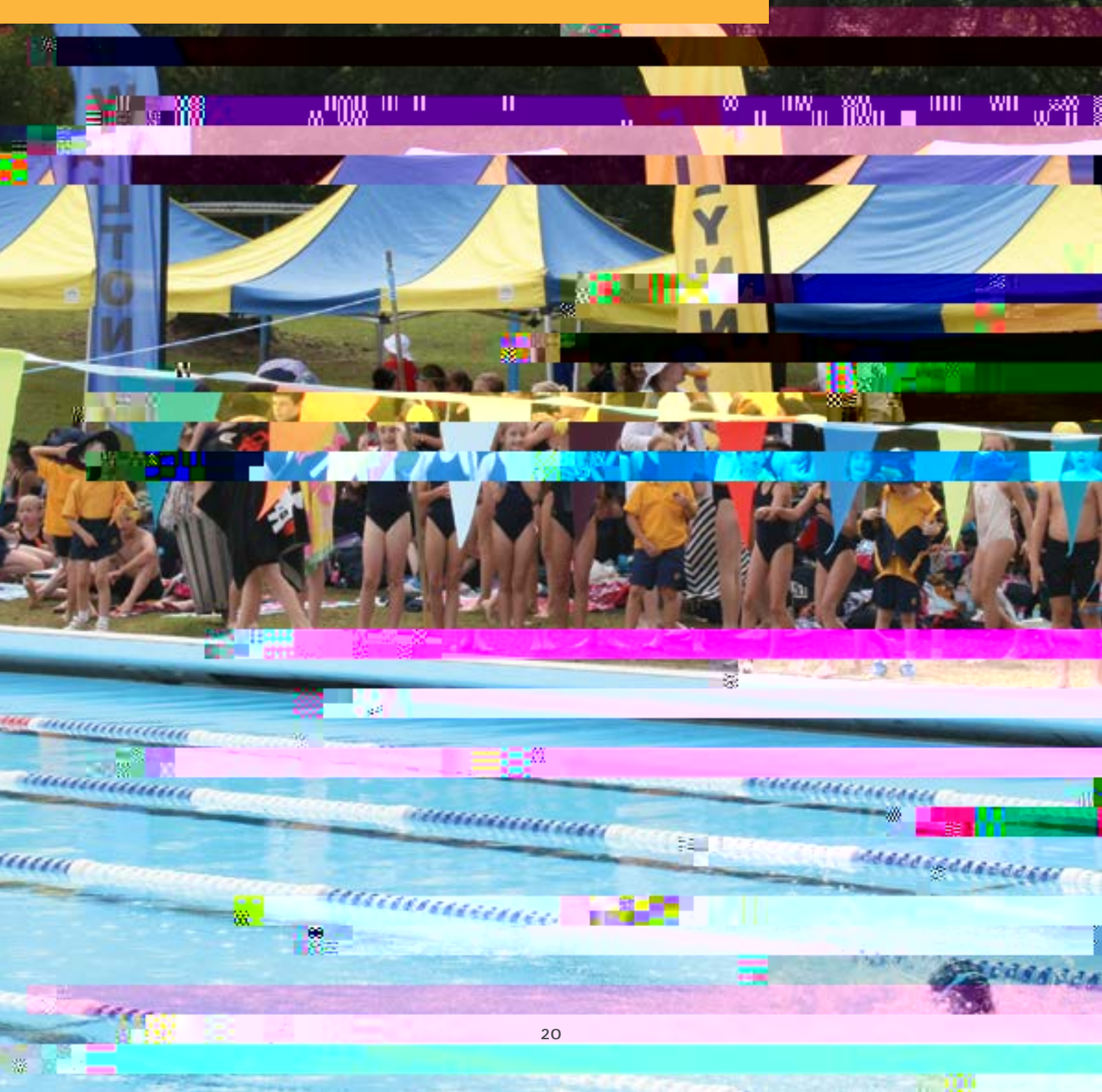


E Á • š μ v š • Ć o o } š š } š Z] Ć ,

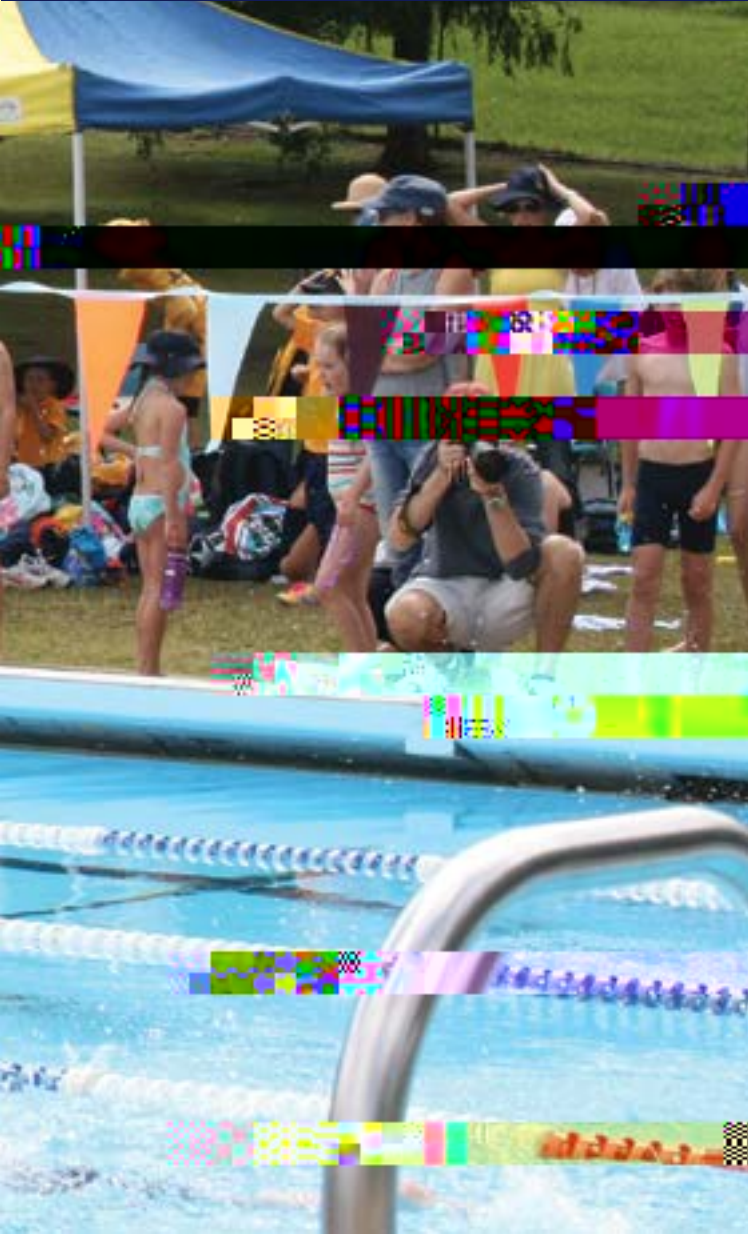




C A RICHNESS



AT OXLEY, WE ARE
IMMENSELY PROUD



}oo P •š + Œ Z}v}Œ Œ Ç u u Œ•X &Œ] v • }(šZ
College may join by applying to the P&F Secretary.

The aim of the Oxley P&F is to be a forum and means
š}]u%o u vš šZ W~&[• } i ŸÀ •W š} %Œ}u}š šZ
µ Ÿ}v o]vš Œ •š• }(šZ KÆo Ç }oo P • Z}}o
community, to assist in the provision of teaching
<µ]u vš v }šZ Œ u v]Ÿ • (}Œ šZ }oo P v





IMPORTANT E E A F A

THE SCHOOL YEAR

Term Dates are found via [56.wis inek:TJ 0.157 0.109 0.1407 scn /C2_0 1 Tf 0.-1.3 Td \[<017D0>2.4 <011C616F001E>T88](#)

THE JUNIOR SCHOOL DAY

8.45 - 9.04AM	Roll Call
9.04 - 9.49AM	> ••}v í ~đñ u}v••
10.34 - 11.02AM	Recess
11.02 - 11.15AM	
12.00 - 12.45PM	> ••}v đ ~đñ u}v••
12.45 - 1.30PM	Lunch
1.30 - 2.15PM	> ••}v ñ ~đñ u}v••

dZ <]v ŒP Œš v šŒ v•]Ÿ school occurs during Week 1 of the new year. All Kindergarten students commence on the .Œ•š Ç }(d Œu í v © v μvŸo íîXîi%u Z ÇX Children will be allocated to }v Ç μŒ}vP šZ .Œ•š Á š} Œ u }v š • Z}}o μvŸo 3.15pm for individualised assessments with their teacher. Our Kindergarten families receive a detailed outline of all these arrangements as part of }μŒ KŒ} v š Ÿ}v %Œ} ••X

ASSEMBLIES

There is a Junior School Assembly every week to celebrate children's performance and achievement.

W 0E vř• 0E Á o }u š} © v X

MAJOR COLLEGE DATES

A list of Major College dates can be accessed via our App and Portal.

WEEKLY ANNOUNCEMENTS

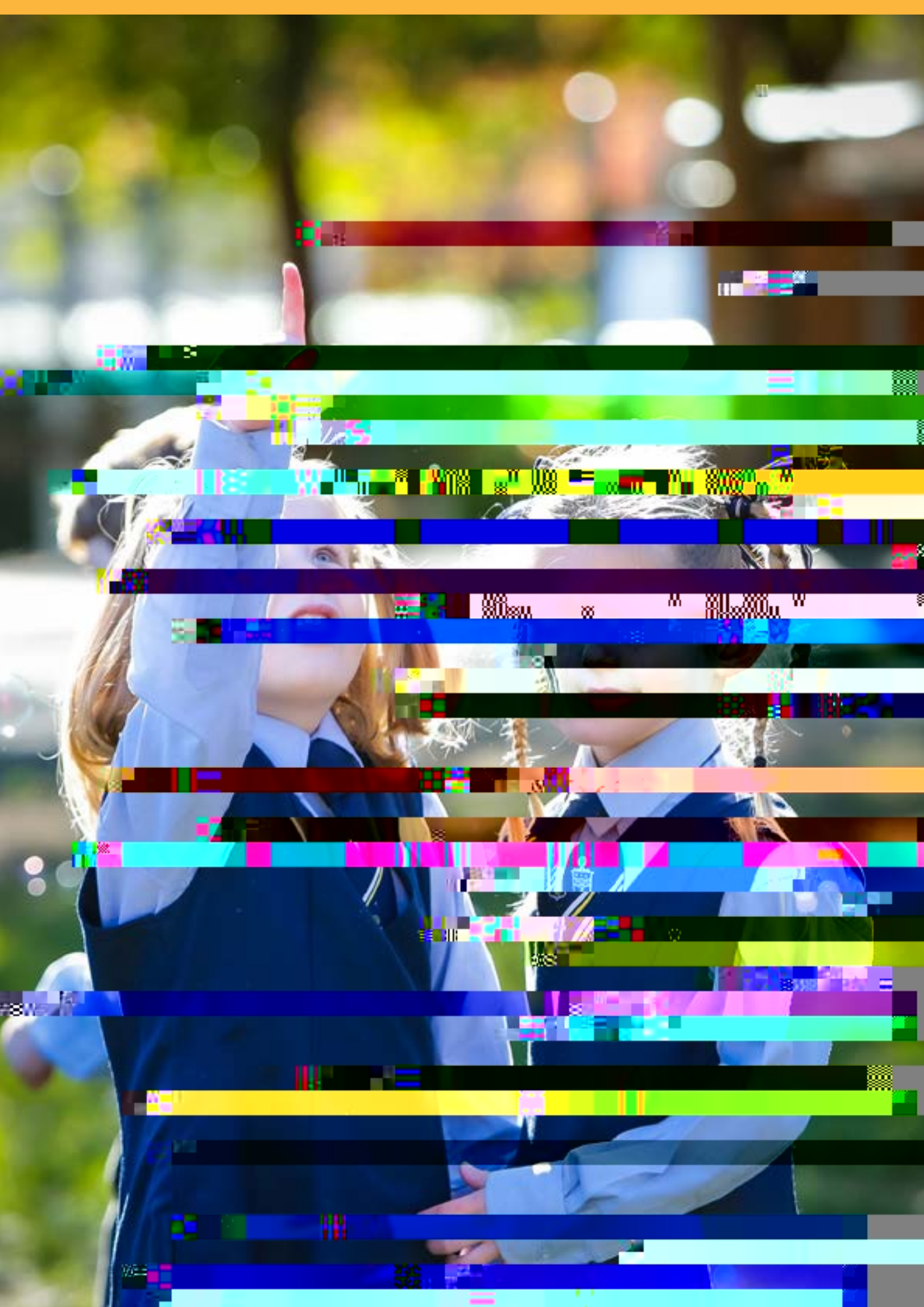
h%o }u]vP Á vř• v v}Ÿ • 0E]0E μ o š š} u u 0E•
of the Junior School community through our Junior

^ Z}}o μ oo Ÿv %oμ o]•Z Á 0EÇ (}0Ešv]PZšX dZ]• %o0E}Á] •
vř0E o]• }uuμv] Ÿ}v š} v}Ÿ(Ç %o 0E vř• }(l Ç Á vř•
in the term or any changes to scheduling or events.

PIN OAK

MESSAGES TO STUDENTS

Please ensure that phone messages during the day are



to th



PO BOX 552, BOWRAL, NSW, 2576

E: office@oxley.nsw.edu.au

W: www.oxley.nsw.edu.au

T: 4861 1366

F: 4861 3328